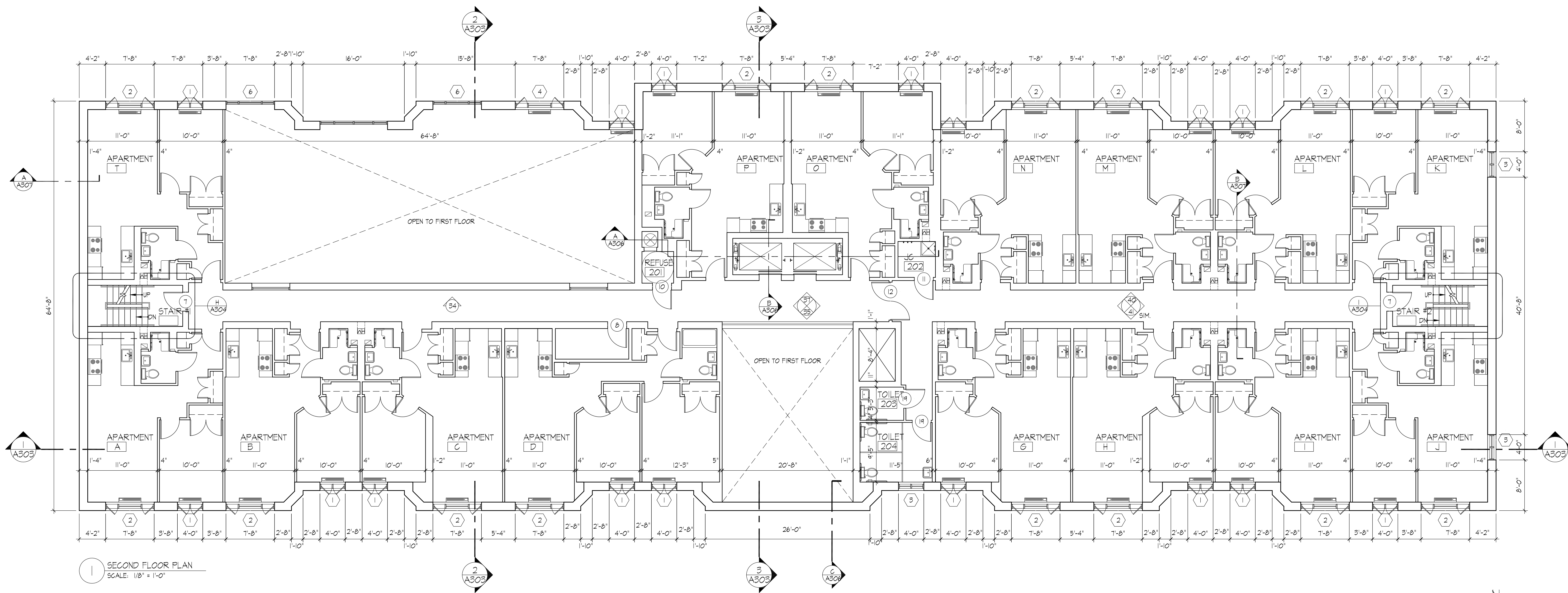
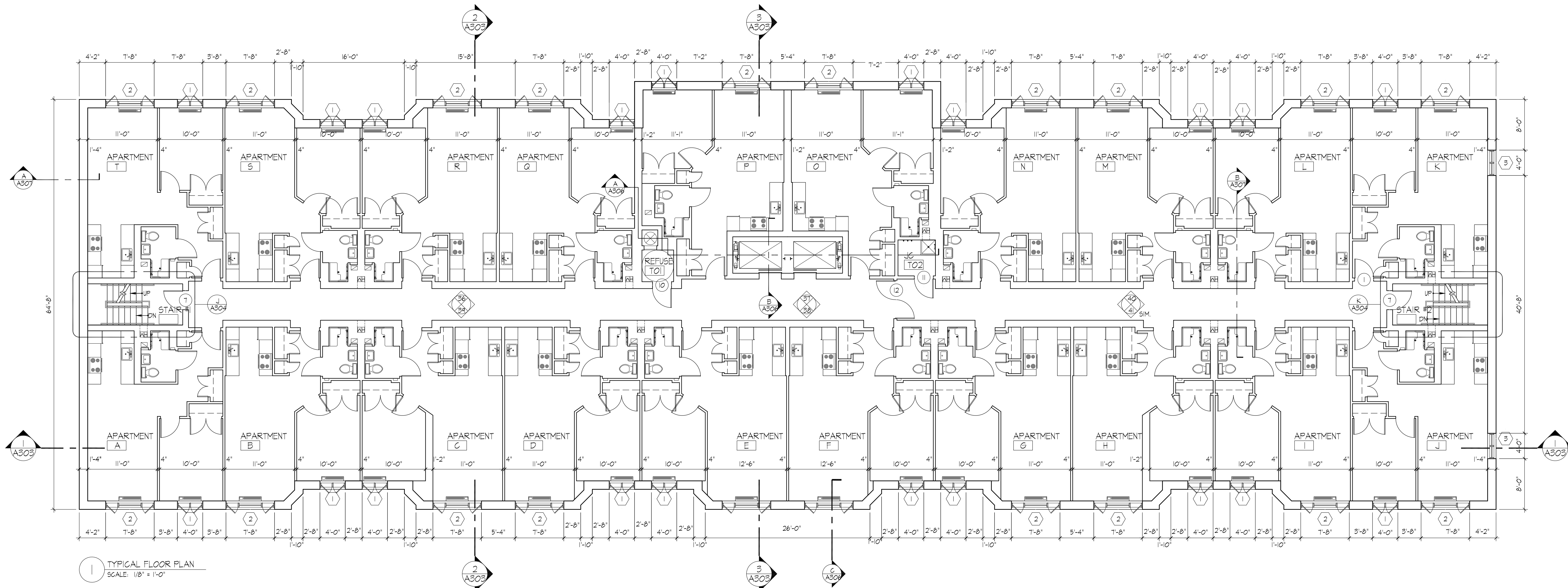


# THE CROWN HEIGHTS RESIDENCE

St. John's Place  
Brooklyn, New York



**ISSUE:**

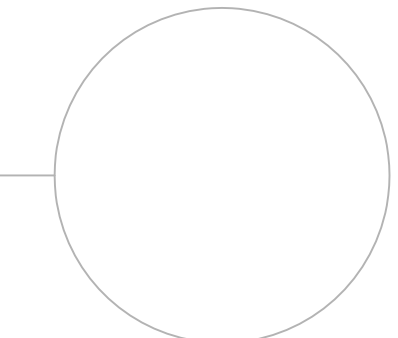
NUMBER	DESCRIPTION	DATE

**REVISIONS:**

NUMBER	DESCRIPTION	DATE

DO NOT SCALE PLANS

SEAL



Terjesen Associates Architects

248 West 35th Street 11th Floor New York, NY 10001  
212.239.1526 Fax: 212.736.7899  
E-mail: email@terjesenarchitects.com

MECHANICAL ENGINEER

STRUCTURAL ENGINEER

DRAWING TITLE

SECOND FLOOR PLAN & TYPICAL FLOOR PLAN

DATE

8-18-06

SCALE

1/8" = 1'-0"

DRAWN BY

prego\_apl

DRAWING NUMBER

A202

PROJECT NUMBER

2101

SHEET NO:

OF XX

